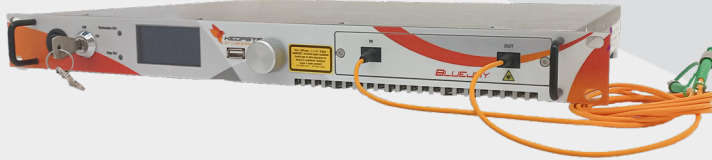


CTFA-PB

CW Thulium Fiber Amplifier



B130



B230



B330



MAIN FEATURES

- Up to 40 dBm of saturated output power
- Broad bandwidth from 1930 to 2050 nm
- Choice of wavelength range
- Eye-safe operation
- Pre-amplifier built-in for good OSNR
- Polarization-maintaining (optional)
- Diffraction limited output beam
- High reliability

MAIN APPLICATIONS

- REMOTE SENSING (LiDAR)
- GAS SENSING
- OPTICAL COMPONENT TESTING
- TEST AND MEASUREMENT
- RESEARCH & DEVELOPMENT

“

These thulium fiber amplifiers are designed for scientific and sensing applications between 1930 and 2050 nm.

CTFA-PB series deliver up to 40 dBm of saturated output power with a weak input range signal. There are models to cover different wavelength ranges.

The high-power thulium fiber amplifiers are built with a pre-amplifier, which gives them an excellent output optical signal to noise ratio (OSNR). Furthermore, the use of a single mode fiber guarantees a high beam quality which is important for sensing applications.

These devices are available in random or polarization maintaining versions. CTFA-PB amplifiers are available in turn-key benchtops which offer the possibility to control the amplifier via the front panel or remotely via serial USB and Ethernet ports.

Finally, the amplifier does not need specific installation. However, Lumibird will offer free support on request.

”

www.keopsys.com

Many options and configurations are available. Please contact Lumibird to find the best match for your needs and compatibility between options.

CTFA-PB

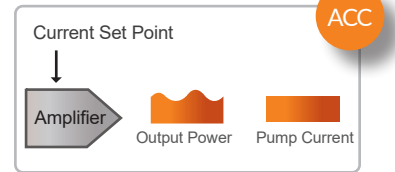
CW Thulium Fiber Amplifier



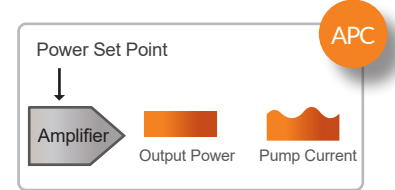
SPECIFICATIONS

	CTFA-PB
Mode of operation	CW
Wavelength range (nm)	1930 to 1960 (BW2), 1960 to 2000 (BW3), 2004 +/-4 (BW4), 2040 +/-5 (BW5), 2050 +/-1 (BW6)
Saturated output power at -0 dBm input (dBm)	From 17 to 40
Input power range (dBm)	0 to +10 or 0 to +15
Polarization	Random (SM) or linear (PM with PER > 17 dB)
Input power monitoring	Yes
Output power monitoring	Yes
Control mode	ACC, APC
Output power tunability (%)	30 to 100
Fiber type	SMF28 or PANDA
Input/output termination	FC/APC, SC/APC

Mode of operation



ACC (Automatic Current Control)



APC (Automatic Power Control)

EASY TO USE !

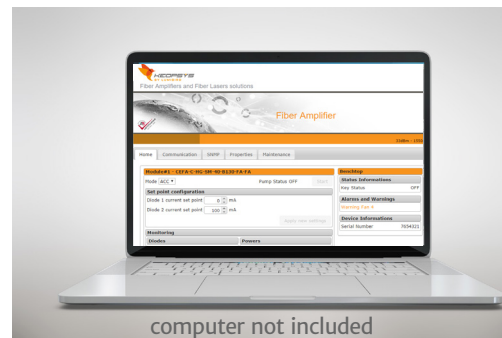


```

APC/Pump ON      50.00
Set Point       : 20.00dBm
Laser Diode     : 828mA
Power Out       : 20.00dBm
Status OK      Options
    
```

Front panel control

- User-friendly and turnkey benchtop
- Dial and front panel display for easy control and monitoring of the product



computer not included

Remote control

- USB port and command set provided
- Web server, Telnet, SSH protocols
- GUI available (option)

Reliability



All our fiber lasers and fiber amplifiers are manufactured according to our ISO certified quality management system, which places the needs and values of customers and partners at the heart of our organization. Throughout the manufacturing process, our components and systems are subjected to rigorous tests and inspections, which guarantees their robustness and reliability in the most demanding environments. Countless units operate continuously without maintenance around the world. The ISO 9001 certificates can be downloaded from our website.



LASER RADIATION
AVOID EYE OR SKIN EXPOSURE TO
DIRECT OR SCATTERED RADIATION
CLASS 4 LASER PRODUCT

www.keopsys.com

Many options and configurations are available. Please contact Lumibird to find the best match for your needs and compatibility between options.



Lumibird has locations across the globe that are available to provide support for any product, service or inquiry. Visit www.lumibird.com to connect with any of our global sites.

