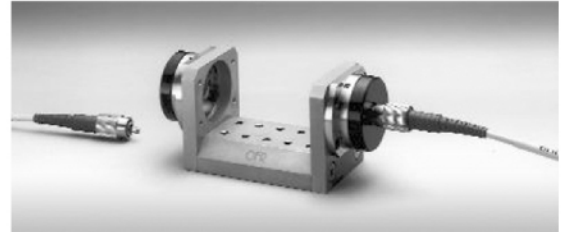


Disconnectable Fiber Couplers

All FFB-X series Fiber-Fiber couplers are aligned to the included input and output fiber cables. Default input/output fibers are 1m in length and do not include fiber connectors on the distal ends of the fiber. Connectors can be added to the distal ends. The input and output fiber cables can be removed and reattached without affecting overall insertion loss.



FFBM-S-1310-X showing connector Interface (FC/APC) FiberCables

STANDARD WAVELENGTHS (nm)

633	780	850	1310
670	810	980	1550
690	830	1064	

Disconnectable Fiber-Fiber Coupler	-S (SM Input / Output)	-P (PM Input / Output)
<p>Includes : FB-38 Bench x2 PAF FiberPorts x2 Fiber cables OFR Alignment</p>	<p>FFBS-S-λ-X Short Base IL: 1310 & 1550nm: 0.6dB ±0.3dB 633, 780, 850, 1064: 0.85dB ±0.3dB</p>	<p>FFBS-P-λ-X Short Base IL: 1310 & 1550nm: 0.6dB ±0.3dB 633, 780, 850, 1064: 0.85dB ±0.3dB</p>
<p>Includes : FB-51 Bench x2 PAF FiberPorts x2 Fiber cables OFR Alignment</p>	<p>FFBM-S-λ-X Medium Base IL: 1310 & 1550nm: 0.6dB ±0.3dB 633, 780, 850, 1064: 0.85dB ±0.3dB</p>	<p>FFBM-P-λ-X Medium Base IL: 1310 & 1550nm: 0.6dB ±0.3dB 633, 780, 850, 1064: 0.85dB ±0.3dB</p>
<p>Includes : FB-76 Bench x2 PAF FiberPorts x2 Fiber cables OFR Alignment</p>	<p>FFBL-S-λ-X Long Base IL: 1310 & 1550nm: 0.6dB ±0.3dB 633, 780, 850, 1064: 0.85dB ±0.3dB</p>	<p>FFBL-P-λ-X Long Base IL: 1310 & 1550nm: 0.6dB ±0.3dB 633, 780, 850, 1064: 0.85dB ±0.3dB</p>