

TEMPERATURE CONTROLLER TK1 WITH OVEN KK1

- Stabilizes two different temperatures in a pair of ovens at once
- Can be controlled manually or from a PC
- Features LED display with the set temperature and actual temperature in an oven indication
- Ideal for heating of both types bulk and thin periodically poled crystals.



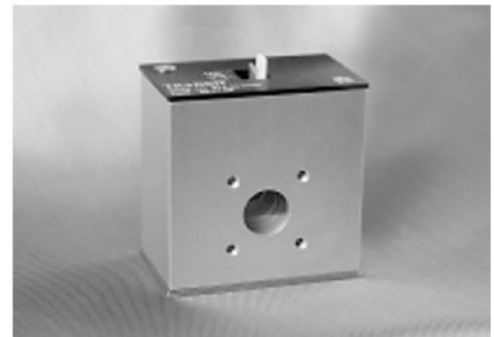
Nonlinear Crystal OVEN TK3

- Features temperature controller and crystal oven in a single housing
- Ideal for precise temperature stabilization of large harmonic generation crystals
- Special positioning mounts are available
- Optional TTL “ready” signal



Nonlinear Crystal OVEN TK4

- Features temperature controller and crystal oven in a single housing
- Ideal for precise temperature stabilization of relatively small harmonic generation crystals
- Provides TTL “ready” signal
- Optional hermetical sealing of the crystal
- Special positioning mounts are available
- Compact size.



Specification

	TK1+KK1	TK3	TK4
Working Temperature Range	RT-200 °C	RT-60 °C	RT-60 °C
Long Term Stability	± 0.1 °C	± 0.25 °C	± 0.2 °C
Accuracy	± 0.5 °C	± 0.5 °C	± 0.5 °C
Operating Voltage	80-240 V AC	12-15 V DC ¹⁾	12-15 V DC ¹⁾
Maximum Power Consumption	45 W	6W	3W
Maximum Crystal Dimensions, (mm)	10 x 10 x 30 ²⁾	15 x 15 x 20 ³⁾	8 x 8 x 12 ⁴⁾
Oven Dimensions, (W x H x D mm)	∅ 52 x 50	48 x 44 x 24	51 x 52 x 31

¹⁾ 100, 220 or 240 V AC power adapter is available.

²⁾ KK1 ovens for 50 mm long crystals are available.

³⁾ Ovens for 50 mm long crystals are available.

⁴⁾ Ovens for 20 mm long crystals are available.