

1" (25mm) Travel Translation Stage

Features

- 90 lbs. Horizontal load & 20lbs. Vertical load
- Hardened steel V-grooves
- Quickly reconfigures from a right hand stage to a left hand stage
- Modular design allows the assembly of 2 or 3 axis stages within minutes

XYZ Stages

| Model | Description |
|-------|----------------------------------------------|
| PT3/M | XYZ 1" travel translation stage, micrometers |

Single Axis Translator Plus Accessories

| Model | Description |
|---------|-----------------------------------------------|
| PT1/M | 1" travel translation stage, micrometer drive |
| PT101 | Base plate for PT series |
| PT102/M | Angle bracket for PT series |



PT3



PT1

2" (50mm) Travel Translation Stage

Features

- 2" (50mm) Travel, Dual Resolution Coarse/Fine Drive System
- Coarse adjustment : 0.055"/revolution
- Fine adjustment : 0.010"/revolution
- Supports 31kg horizontal load, 18kg vertical load
- Large mounting surface with numerous mounting
- Modular design allows assembly of 2 or 3 axis stages within minutes

XYZ Stages

| Model | Description |
|-------|---------------------------------|
| LT3/M | XYZ 2" travel translation stage |

Single Axis Translator Plus Accessories

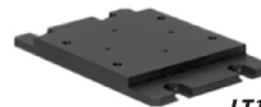
| Model | Description |
|---------|-------------------------------|
| LT1/M | Single axis translation stage |
| LT101 | Base plate for LT series |
| LT102/M | Angle bracket for LT series |



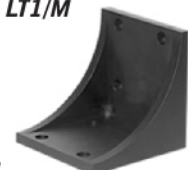
LT3/M



LT1/M



LT101/M



LT102/M