

Applications

The standard apertures may be used for spatial filters, gas/liquid separators, molecular beam masks, particle counters, pinhole cameras and many other optical or mechanical purposes. Our apertures will produce high quality diffraction patterns.

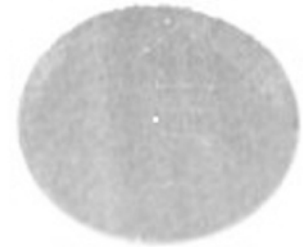
Specifications

Diameter	Ø9.5mm +.025/- .050mm
Thickness	0.013-0.050mm
Centering	◎ ±0.125mm
Circularity	○ > 1.5 μ
Material	SS-304

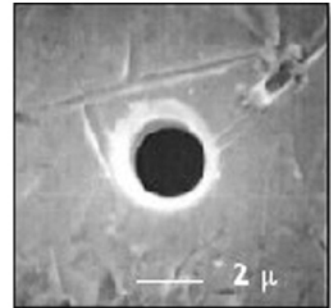
Part #	Aperture	
	Dia. (μ)	Tol. +/- %
SS-3/8-Disc-1	1	50
SS-3/8-Disc-2	2	40
SS-3/8-Disc-3	3	20
SS-3/8-Disc-4	4	15
SS-3/8-Disc-5	5	15
SS-3/8-Disc-6	6	15
SS-3/8-Disc-8	8	10
SS-3/8-Disc-9	9	10
SS-3/8-Disc-10	10	10
SS-3/8-Disc-12	12	10
SS-3/8-Disc-15	15	10
SS-3/8-Disc-17	17	10
SS-3/8-Disc-20	20	10
SS-3/8-Disc-23	23	10
SS-3/8-Disc-25	25	10
SS-3/8-Disc-30	30	10
SS-3/8-Disc-35	35	10
SS-3/8-Disc-40	40	10
SS-3/8-Disc-45	45	10
SS-3/8-Disc-50	50	10
SS-3/8-Disc-75	75	10
SS-3/8-Disc-100	100	10
SS-3/8-Disc-150	150	5
SS-3/8-Disc-200	200	5
SS-3/8-Disc-300	300	5
SS-3/8-Disc-400	400	5
SS-3/8-Disc-500	500	5
SS-3/8-Disc-600	600	5
SS-3/8-Disc-700	700	5
SS-3/8-Disc-750	750	5
SS-3/8-Disc-800	800	5
SS-3/8-Disc-900	900	5
SS-3/8-Disc-1000	1000	5

*These apertures are unmounted

*For optional aperture mounting parts add part # MT-25 or MT-16



3/8" Disc



SEM Aperture Shot



25mm Mount (MT-25)



16mm Mount (MT-16)